

Fall 2006

LINE S



TED

A publication of Teacher Education Division of The Council for Exceptional Children

TED Line-up

What is in this issue...

- Lines from the President.....2-3
- TED Elections.....4-5
- San Diego Information.....6-8
- Nasim Dil Award.....9
- NASDSE.....10
- Legislative Update.....11
- CEC Workshops.....12
- Call for Proposals.....13
- Caucus News.....14
- TED Dissertation Award.....15
- Paraprofessional SIG.....15

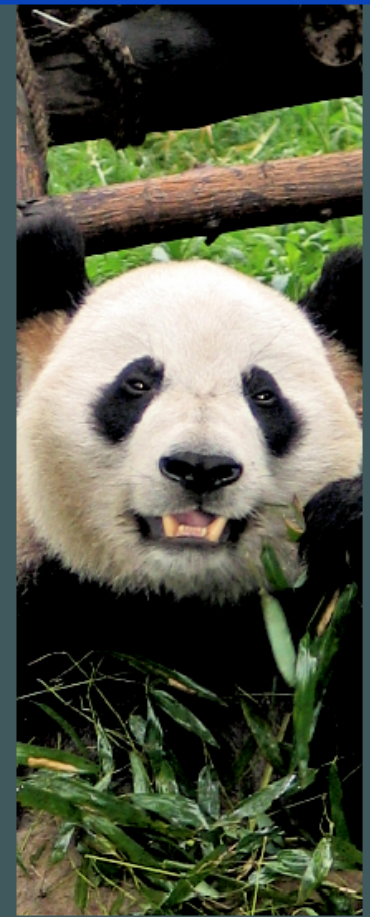
Email Karen Voytecki with future *TEDLines* content: voyteckik@ecu.edu



TED/TAM Conference • November 8 - 11, 2006

California here we come!

Details in
this issue!



TED Mission Statement

The Teacher Education Division of the Council for Exceptional Children is an organization that supports and stimulates continued improvements in practices in order for all individuals with diverse abilities and disabilities to achieve optimal educational outcomes. Composed of teacher educators, and others, it supports the professional development of individuals with diverse abilities and disabilities and their families.



For the latest information and up to date issues regarding TED... visit us at www.tedcec.org



Lines From The President...

Linda Patriarca

San Diego, I hope you're ready because TED is coming!

The 2006 TED/TAM Conference is just around the corner and I know that it is going to be EXTRAORDINARY!

Mark your calendars NOW for November 8-11, 2006 and finalize your arrangements today! All of the information you need to register for the conference and make travel arrangements is posted on the TED website (www.tedcec.org).

This year's conference, appropriately entitled, "*Addressing Teacher Shortages and Quality and the Emerging Role of Technology*" is filled with high quality sessions, interspersed with socials and receptions designed to allow for informal chats between old friends, informal discussions with board members or presenters and occasions to make new friends! Although it would be impossible to list everything that the conference has to offer, I will take this opportunity to highlight just a few.

- (1) An Ice Cream Social on Wednesday evening. Glenn Buck, a longstanding TED member will provide some wonderful jazz entertainment for our listening pleasure. The ice cream has ZERO calories so don't be afraid to indulge!
- (2) Two NCATE Pre-Conference training workshops organized by Karen Santos.
- (3) A Thursday morning panel "keynote" presentation featuring, Paul Sindelar, Ed Boe, Bonnie Billingsley, Mary Brownell, Sean Smith, and Michael Rosenberg, who will discuss the latest research findings related to special education teacher preparation. Don't miss it!
- (4) A session focused on giving authors critical information about "Publishing in the TESE journal."
- (5) A Thursday evening TED/TAM Presidents' Reception entitled: "Come to the Cabaret!" Food and entertainment provided. Don't plan to go out for dinner!
- (6) Kaleidoscope Program. A splendid event planned by and for graduate students from around the country. Melissa Miller, the current Kaleidoscope Chair, is an excellent example of the outstanding doctoral students this venue attracts! If you have never attended Kaleidoscope plan to do so this year!
- (7) Several caucuses, special interest groups and committees will be meeting during the conference (Small Special Education Programs, Diversity, Women in Leadership, Paraprofessional Special Interest Group, Conference, Publication and Membership Committees to name a few). If you're interested in becoming a member of any of these groups or if you're simply curious, drop by! I guarantee that you will be welcomed!
- (8) Over 300 High Quality Sessions, including lots of presentations focused on Technology and Media as related to effective instruction and mentoring in teacher education.
- (9) Saturday luncheon featuring Jane West who will brief us on current happenings in Washington, D.C.
- (10) Six offsite events have been planned,--among them a trip to the San Diego Zoo and a Wine Tasting Bus Trip to the Temecula Valley! What great opportunities to do a little sightseeing!

Undoubtedly there are countless information-rich and enjoyment filled opportunities available to you at this year's conference. You won't want to miss this event! Mail in your registration today!

I would be remiss if I didn't take this opportunity to express my deep appreciation to National University, Stu Schwartz (the 2006 TED/TAM Conference Chair) and his entire committee for all of their efforts to bring you the very best in every feature of conference participation. National University has been a generous sponsor of this conference. They have not only provided support services but have also contributed funds toward this conference. For that we are deeply grateful! Stu Schwartz, a faculty member at National University and Chairperson of this upcoming TED/TAM conference, and his entire crew have worked tirelessly for months to meticulously plan this spectacular event for all of us! Doing this for an organization—especially when the chair and the committee members are donating their time and talents—is truly a labor of love! Thanks everyone for all you have done! We are in your debt!

Farewell to All. Since this will be the last newsletter that I will write as President of TED. I want to say that I have thoroughly enjoyed the honor and opportunity to serve TED in this capacity. One of the most enjoyable aspects of this position has been getting the chance to meet and work with such smart and dedicated professionals from around the country—both in TED and in TAM!

I leave, though, knowing that we, as an organization are in GREAT hands! As of January 1, 2007 Georgia Kerns will take over the reins as President of TED. She brings with her a wealth of experience as a longstanding active participant of TED—both inside the Small Special Education Programs Caucus and inside the organization as well. And in the wings ready to take over the position in 2008 is Chriss Walther-Thomas. In January, Chriss becomes President-Elect of TED. In addition to her role as TED's President-Elect, Chriss will also be serving as the current President of HECSE (Higher Education Consortium for Special Education). Her leadership roles in both of these organizations will surely bring TED and HECSE closer together for the collaborative work that so desperately needs to be done on behalf of teacher preparation in special education.

Get Involved. Support TED! Support your Profession! As I sit back and reflect upon the year I feel gratified at all that we have been able to accomplish. But there is much work that needs to be done. As all of you know, there are several major issues before us as an organization that relate directly to our work as teacher educators. Volunteering is a worthy cause and is part of what is necessary to effect change. Supporting organizations that are involved in informing the public, educating its professionals and serving as a representative to all stakeholders is also critically important. That is why I am encouraging you to renew your membership in CEC and in TED. If you know of a friend, colleague or student who would also like to become a member please refer them.

Your gift of membership dollars will help the TED division and the national CEC organization tremendously in carrying out its work in serving teacher educators and teachers in special education. **Just think...if every member recruited JUST one member to TED, we would DOUBLE the size of our current organization!**

Linda Patriarca





TED Elections



The following TED members have agreed to run for office.
Please vote. Online voting will be available at <http://www.tedcec.org>.

Vice President

Peggy Gallagher

Dr. Peggy Gallagher is running for the office of Vice-President because she would like to continue to help TED be an important resource in the world of teacher education and special education. She is the Chair of the Department of Educational Psychology and Special Education at Georgia State University in Atlanta, where she has also coordinated their program in Early Childhood Special Education. Peggy publishes regularly in the area of personnel preparation and coordinates a statewide contract with five other Georgia universities to train parents and professionals in early intervention. She has been an active member of TED for over 20 years, serving on the Finance Committee from 1998-2002. She is also an active member of DEC, serving on the personnel preparation committee and the standards validation workgroup. Peggy has been involved in the European Teacher Education Network (ETEN) and would love to see TED expand its international focus. She serves on the Board of Review for *Teacher Education and Special Education* and the *Journal of International Special Education Needs*. As chair of a doctoral degree granting program, Peggy is also a member of the Higher Education Consortium in Special Education (HECSE).

Secretary

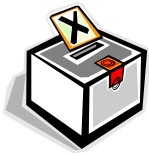
Stuart Schwartz

Dr. Stuart Schwartz is a professor of special education at National University in San Diego. He retired in 2004 from a similar position at the University of Florida where he taught for 30 years. At National University he coordinates the Level II Special Education Credential Program and the Special Education Online Program. He is the chairperson for this year's TED/TAM conference and he is the current TED Board Secretary. He hopes to continue to serve on the TED Board.

Member-at-Large (Knowledge and Skills)

Judy Winn

Dr. Judith Winn is an Associate Professor in the Department of Exceptional Education at the University of Wisconsin-Milwaukee. She coordinates the UWM-MPS Internship Program, an alternative route certification partnership between the University and Milwaukee Public Schools to prepare special education teachers in a way that addresses the severe shortages in the district. This project has received both federal and foundation funding. At UWM, Judy teaches courses in literacy, assessment and learning disabilities and coordinates the field component of the Middle Childhood Early Adolescence program. Judy has been a liaison to an urban university partnership school and participated in 3- year research study of the integration of technology into early literacy instruction in that school. She has also worked on a federal grant examining the accomplishments and problems of practice of beginning special educators. Judy has published articles and book chapters about beginning special education teachers, literacy, assessment, and the development and implementation of standards in teacher education. Currently she is the special education higher education representative on a state task force to make recommendations about Specific Learning Disabilities criteria, Early Intervening Services, and Response to Intervention in Wisconsin. In 2002, she served as a member on the CEC Sub-committee on Accreditation. Judy has long been an active TED member, serving for several years as the co-chairman of the TED Forum. She currently is the co-chairperson for the 2007 TED Conference to be held in Milwaukee. Judy's 14 years as a classroom teacher, her many years as a teacher educator, her work with beginning teachers, her participation in the development of UWM special education teacher certification standards, her membership on the CEC sub-committee on Accreditation, and her varied roles in TED will help her to well represent TED on the Knowledge and Skills Committee.



Member at Large (Knowledge and Skills)

Craig Rice

Dr. Craig J. Rice has been a member of TED since completing his doctorate in 1999. In 2000, Dr. Rice attended his first TED event, the Summer Institute. Since then, he has attended each TED Summer Institute and has served as the TED Chair of Professional Development since 2003. Prior to his appointment as Chair, Dr. Rice had been a member of TED's Membership committee as well as an active member of TED, sitting in on all Board meetings since TED 2002.

Representative Assembly

Marilyn Friend

As TED's Representative to the Representative Assembly for the past 2-½ years, Dr. Marilyn Friend has learned how important it is to have the voice of TED members heard in this key CEC governance group. For example, in part because of concerns raised by TED at the Representative Assembly in April 2006, the CEC task force developing criteria and a template for evaluating practices proposed as being evidence-based decided that significant revisions to the draft documents were needed. A TED representative was added to this group, and so the perspectives of TED members are being integrated into the work. Marilyn's commitment to continuing in this role is a result of observing the impact that TED can have on critical CEC issues through the Representative Assembly.

In addition to the experience just noted, Marilyn has been an active CEC and TED member since 1982. Leadership roles have included working as TED's President (and the other offices leading to that role) as well as serving as Archivist, Secretary/Treasurer (when those offices were combined), and Chair of the Publications Committee. Marilyn has also been Chair of the CEC Professional Standards and Practices Committee and has spent her career dedicated to fostering effective teacher education. Marilyn states that it would be a pleasure to continue to contribute as a TED Board member.

Representative Assembly

Rebecca Hines

Dr. Rebecca Hines is a tenured, Associate Professor of Exceptional Education at the University of Central Florida. She teaches in the area of behavior disorders and assistive technology, and consults nationally on topics of inclusion. She has written numerous articles concerning children with disabilities and their families, and regularly works in the community to adapt materials for children with special needs. She has received federal funding and serves as Project Director for a teacher preparation grant which focuses on online coursework and distance mentoring, and has served as a Principal Investigator for a state inclusion project. She has been a member of the Teacher Education Division for 6 years and is an active member of the local and state units of the Council for Exceptional Children.

With the trials and tribulations of the tenure process behind her, Rebecca is most interested in now turning her professional energy to service in our field and wishes to be considered for the position of Representative for TED. She has the communication skills, passion, and commitment to accurately and professionally convey the views of TED to the Representative Assembly of CEC and otherwise serve TED members. Rebecca will continue to serve children, parents, and teachers in her own community, and would welcome the opportunity to serve in a national capacity to work closely with colleagues from around the country to continue advancing our field.





TED/TAM Conference • November 8 - 11, 2006

California here we come...

Don't miss all these
exciting conference
events! Make your
reservations now!

For details:

www.tedcec.org



The University of Values

Hosted by National University

*Casual Friday
Come To the Cabaret
Course Sharing
Diversity Caucus
Doctoral Student Reception
Getting Published
Higher Education Consortium
Holiday Weekend
Ice Cream Social
Kaleidoscope
Keynote Panel
Membership Meetings
NCATE Training
Paraprofessional SIG*

*Presidents' Reception
Professional Program
Small Programs Caucus
Special Offsite Events
Vendors and Recruitment
Washington Luncheon
Women in Leadership*



Hints and Suggestions

to make your stay in San Diego more enjoyable...

More details are available on our website

www.tedcec.org

Make your hotel reservations early as our conference hotel may fill soon. But if it does, don't worry as the overflow hotel is very nice. And it is fun taking the trolley between the two hotels!

The Keynote Panel is Thursday at 10 am. Don't miss this as Paul Sindelar has assembled an excellent group of researchers who will provide us with the latest information. Each panel member will also present on Friday.

We have two fun events planned: a 'make your own ice cream sundae social' on Wednesday evening featuring the music of Glenn Buck; and our annual, not-to-be-missed, Presidents' Reception which will be an Evening at the Cabaret. The food and entertainment Thursday evening will certainly be a conference highlight!

Wondering how to get from the airport to the hotel? Are you hoping to save money on your travel expenses? If so, be sure to check our website where you'll find several travel suggestions.

What to do? What to do? Well there's much to do in San Diego so we suggest arriving a few days early and staying a few days after. We have six organized sightseeing events planned; those are described on our website. We also will have an "Ask Me, I'll Help" table staffed by Glee Shaddock and her knowledgeable and friendly volunteers. These folks will help you with restaurants, local transportation, sight seeing --just about anything you'll need to make your stay in San Diego enjoyable.

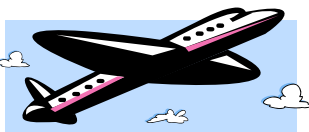
When you register for the conference be sure to include the Saturday luncheon. Jane West will bring us up-to-date on all of the exciting happenings in Washington. Jane's annual presentation is always beneficial as she helps us to be more effective on the national level.

Our exhibit area will be open all day Friday and all morning Saturday. Be sure to stop by and visit the vendors. Remember that they are supporting us by paying for display space at our conference so please support our vendors.

Bring your jeans for Casual Friday.

Do you have a handout you would like to distribute? Be sure to make arrangements for this in advance; details are on the website. There won't be a table for free distribution of materials this year.

There are 26 airlines that serve the very convenient San Diego International Airport. For a list of the airlines and their phone numbers please check www.san.org. Amtrak also has a convenient station in downtown San Diego. For Amtrak information please consult www.amtrak.com.



**What else can we do to help you enjoy the conference?
Just let us know-- sschwartz@nu.edu or 858.642.8371.**

Respectfully submitted by: Dr. Stuart Schwartz

CONFERENCE REGISTRATION
29th Annual TED Conference -- 2nd Annual TED/TAM Conference
November 8-11, 2006 San Diego, CA



Mail registration to:

Dr. Stuart E. Schwartz, National University—School of Education
11255 N. Torrey Pines Road, La Jolla, CA 92037-1011

Name _____
 Last First

CEC # _____ Affiliation _____

Address _____
 Street _____

 City State/Province Zip/Postal Code

Telephone (_____) _____ Email _____

ALL PRESENTERS MUST REGISTER BY SEPT. 29TH OR THE PRESENTERS' NAMES AND SESSIONS WILL BE DELETED FROM THE PROGRAM. All other pre-registrations must be post-marked by October 9th. Onsite registration fees will be enforced after October 9th.

Registration Fee*	Pre-registration	Onsite	Amount
___ TED or TAM member	\$245	\$325	_____
___ Non-member	\$285	\$365	_____
___ Full-time student	\$170	\$220	_____

Special Events

___ Saturday luncheon featuring Dr. Jane West*	\$20	_____
___ Saturday luncheon guest fee	\$35	_____
___ Presidents' Reception guest fee	\$45	_____
___ NCATE Training-CEC member \$350, non-member \$500		_____
___ Special Offsite Events (Form must be attached.)		_____

See Special Events section for offsite event information.

TOTAL ENCLOSED _____

**Registration includes the Ice Cream Social, Presidents' Reception, conference materials and all breaks—it does not include the Saturday luncheon.*

Make checks payable to 'TED/TAM Conference 2006' and remit in U.S. Dollars only. Credit cards and purchase orders cannot be accepted.

There is a \$75.00 fee for all cancellation requests. Written requests must be received by October 9th. There will be no refunds after October 9th.

Are you a TED member? ___ TAM? ___ Is this your 1st TED or TAM conference? _____

Please indicate below, by October 9th, any needed accommodations that will ensure your successful participation in the conference.

Small Special Education Programs Caucus' Nasim Dil Award for Outstanding Service to Teacher Education

The Nasim Dil Award for Outstanding Service to Teacher Education is an annual award given to an individual who has demonstrated exemplary service to the development and advancement of quality teacher education in special education.

Criteria: The criteria for the selection of the recipient of the Small Special Education Programs Caucus (SSEPC) Nasim Dil Award for Outstanding Service to Teacher Education include demonstrated commitment to personnel preparation in small special education programs through two or more of the following areas:

- a. Service in leadership roles to advance teacher education opportunities in small special education programs (e.g., holding a leadership position(s) in teacher education organizations; recipients of honors and awards, either at home IHE or on the national level).
- b. Active promotion of quality teacher education in small special education programs (e.g., writing articles for the SSEPC Monograph, being involved in state initiatives involving teacher education, developing innovative teacher education curricula and teaching practices, etc.).
- c. Active participation in activities promoting opportunities for faculty from small special education programs to have a voice in the field of special education teacher education (e.g., encouraging and leading SSEPC members' involvement in political and educational activities that relate to teacher education, being involved in state-level decision making involving teacher education).
- d. Active participation in activities promoting collaboration (in terms of research and professional development) among members of SSEPC (e.g., initiating, developing, and coordinating activities that involve several SSEPC members: conference presentations, research projects, co-authoring, SSEPC-sponsored events, etc.).
- e. Active participation in SSEPC Service in leadership roles to advance teacher education
Nominees must meet the following criteria:
 - a. Must be a member of TED and SSEPC.
 - b. Nominees may be nominated or self-nominate.
 - c. Previous award winners will not be eligible again within a 10 year time period.

Nomination Materials should include the following:

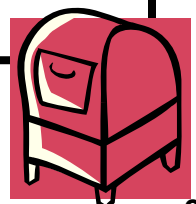
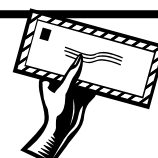
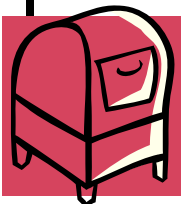
- a. A current vita of the nominee;
- b. A letter of nomination documenting the nominee's eligibility for the award;
- c. Letters of support for the nomination from individuals knowledgeable of the nominee's contributions relative to one or more of the criteria stated above.

Deadline: Nomination materials are **due October 15, 2006**.

Nomination materials should be sent to the TED Interim Administrative Assistant:

Dr. Karen Voytecki
Department of Curriculum and Instruction
College of Education
East Carolina University
Greenville, NC 27858

The recipient of the Nasim Dil Service Award will be honored at the SSEPC Reception at the 2006 TED/TAM Conference in San Diego.





National Association of State Directors of Special Education, Inc.

OSERS

Office of Special Education and Rehabilitative Services

IDEA Partnership at NASDSE

National Association of State Directors of Special Education
1800 Diagonal Road, Suite 320
Alexandria, VA 22314
1-877-IDEA INFO (1-877-433-2463)
email: partnership@nasdse.org

The following is an announcement of the community-based public meetings that are being held to follow up on the regulations release for IDEA 2004. Asst. Sec. Hagar and OSEP Director, Alexa Posney, will be presenting at each meeting. You are encouraged to attend a nearby meeting.

NEWS FROM THE U.S. DEPARTMENT OF EDUCATION

The Office of Special Education and Rehabilitative Services (OSERS) Will Be Hosting a Series of Community-based Public Meetings on the *IDEA 2004* Regulations.

These public meetings will serve two major purposes. First, the meetings will provide the public with an opportunity to learn about the major concepts and principle changes in the new regulations. Second, the meetings will serve as a mechanism for the public to learn about and obtain some of the many resources and supports available from OSERS to assist in the implementation of these regulations. These resources and supports include a dedicated Web site which contains an array of information on the Part B regulations, with much more to come, as well as video tapes, topical briefs, a list of OSERS-supported technical assistance centers, and a list of conferences and other meetings in which information on the implementation of the regulations will be available.

Please check for updates on meeting locations and times as they become available on the IDEA 2004 web page at <http://www.ed.gov/IDEA>.

Please refer to the updated schedule for the most current meeting information:
<http://www.ed.gov/policy/speced/guid/idea/idea2004-schedule.html>

Charlotte, North Carolina	Tuesday, September 26, 2006
Tampa, Florida	Wednesday, September 27, 2006
Philadelphia, Pennsylvania	Wednesday, October 17, 2006
Seattle, Washington	Tuesday, October 24, 2006
Minneapolis, Minnesota	Wednesday, October 25, 2006
Dallas, Texas	Thursday, November 2, 2006
Denver, Colorado	Wednesday, November 8, 2006
Sacramento, California	Tuesday, November 14, 2006

Building the Legacy: IDEA 2004

<http://idea.ed.gov>

The U.S. Department of Education, Office of Special Education Programs, created an IDEA website to provide a "one-stop shop" for resources related to IDEA and its regulations. The website was released on August 3, 2006. It is a "living" website and will change and grow as resources and information become available. When fully implemented, the site will provide searchable versions of IDEA and the regulations, access to cross-referenced content from other laws (e.g., the No Child Left Behind Act (NCLB), the Family Education Rights and Privacy Act (FERPA), etc.), video clips on selected topics, topic briefs on selected regulations, links to OSEP's Technical Assistance and Dissemination (TA&D) Network and a Q&A Corner where you can submit questions, and a variety of other information sources.



Legislative Update

Jane E. West, Ph.D.
TED Consultant



IDEA Regulations Released

The IDEA regulations have been released. The statute was enacted in December, 2004, and the long awaited regulations are finally a reality.

When the regulations were released on August 3rd, 2006, Secretary Spellings congratulated Assistant Secretary John Hager and Office of Special Education Programs director Alexa Posney for their work on the regulations. She also congratulated former acting OSEP director Troy Justesen on his work on the regulations, and also on his Senate confirmation to be the new Assistant Secretary for the Office of Vocational and Adult Education.

The theme of Secretary Spellings' remarks was that special education students are an integral part of general education – as they have never been in the past -- and a more sophisticated approach to instruction and assessment is emerging. She noted that now is the time to get to work in implementing best practices, and that in her travels around the country the tenor of what she hears is “Tell us what to do and we’ll do it.” She noted that we have built a strong appetite for doing this more sophisticated work. The next step is to launch the technical assistance and support so that implementation can move forward. She also indicated that the Part C regulations were in Departmental Clearance before going to OMB. Continued work is underway to launch the state pilots on paperwork reduction and IEPs. In addition, the 2% regulations for special education students are still under development.

Assistant Secretary Hager described the regulations as a document that integrates current law, previous regulations and new regulations, noting that they should be user friendly. A video on the new regulations has been developed, as well as a tool kit. Meetings will be held around the country on the new regulations, and a curriculum has been developed to train stakeholders.

Alexa Posney described the key concepts behind the regulations as accountability, flexibility and responsibility. She thanked the many people who had worked on the regulations and acknowledged them, including Joletta Reynolds, Tom Irvin, Troy Justesen, Wendy Tada and the OSEP staff. She noted that the regulations are over 1,000 pages long and that 70% of the document is the preamble, which includes an analysis of all of the 5,500 comments that were received. Key areas of the regulations that changed from the NPRM are:

- 1) RTI. It is clarified that determining eligibility for special education for a student with learning disabilities by using the discrepancy model is not prohibited; however RTI is preferred.
- 2) Highly Qualified: Special education teachers teaching students to alternate achievement standards (the 1% students) must meet elementary school qualifications or higher level requirements if they are providing a higher level of instruction. States are permitted to create separate HOUSSE systems for special education teachers, so long as the content requirements are not lower than for general education teachers. New special education teachers have up to 2 years to meet the content requirements. Teachers in private schools where special education students are placed and tuition is paid by public funds do not have to meet the highly qualified teacher requirements.



- What new requirements will I have to satisfy to be highly qualified?
- What are my district's responsibilities for parentally placed students with disabilities in private schools?
- What will the *IDEA* regulations do to reduce paperwork for IEP team members?
- What approaches to identifying students with learning disabilities are available to me?



Understanding the *IDEA 2004* Regulations: CEC Workshops

What Do the *IDEA 2004* Regulations Mean for YOU?

The Council for Exceptional Children (CEC) answers these questions and MORE with the IDEA 2004 regulations workshops. CEC takes to the field with the official IDEA 2004 regulations and announces a 9-city tour. The one-day in-person workshops will help both general and special educators ensure children with disabilities succeed! Do not miss the opportunity to participate and learn from some of the most trusted policy experts in special education!

Topics

- ◆ Highly Qualified Teachers
- ◆ IEPs
- ◆ Discipline
- ◆ Identifying Students With Learning Disabilities
- ◆ Reducing Over-Representation
- ◆ Procedural Safeguards
- ◆ Response to Intervention
- ◆ Early Intervening

Who Should Attend

All educators including: **Special Education Administrators, Special Education Teachers, Researchers, Principals, General Education Teachers, Higher Education Professionals, and Education Consultants.**

Presenters

Deborah Ziegler, CEC Associate Executive Director for Policy and Advocacy with Daniel Blair, CEC Senior Director for Public Policy or Kim Krockner-Hymes, CEC Public Policy Specialist

Cost

CEC Members: \$250 Non-Members \$350
Participants receive: .5 CEUs, comprehensive materials, and lunch.

Where and When

The IDEA workshops are conveniently located throughout the United States. Each session will run from 10:00 a.m. to 4:00 p.m.

Online *IDEA 2004* seminars to be announced at a later date.

* In conjunction with the California State CEC Convention.

Chicago, IL	October 17
Orlando, FL	October 31
Colorado Springs, CO	November 6
* Garden Grove, CA	November 8
Dallas, TX	November 17
Seattle, WA	November 28
Boston, MA	December 1
Philadelphia, PA	December 6
Washington, DC	December 7



CALL FOR PROPOSALS

for

MAKING AN IMPACT: Best Practices to Enhance Achievement, Assessment, and Accountability for P-12 Learning

**A Conference for Institutions of Higher Education
Who Prepare Teachers and Leaders**

**Friday & Saturday, March 16-17, 2007
Crowne Plaza, Atlanta Perimeter Northwest**



OPENING KEYNOTE:

Preparing Teachers and Administrators to Assess FOR Learning

Rick Stiggins

Founder and Director of the ETS Assessment Training Institute

Kennesaw State University's Bagwell College of Education (BCOE), Center for Service, Outreach & Partnerships, and the Center for Excellence in Teaching and Learning (CETL) are excited to announce the first annual Impact on P-12 learning conference for institutions of higher education who prepare teachers and educational leaders. The 2007 conference will focus on how colleges and universities can measure, report, and enhance the impact of their teacher and leader preparatory programs on all P-12 student achievement. The meeting will include keynote speakers, concurrent symposia and workshops, and poster sessions. The target audience includes college and university faculty who prepare teachers and leaders, college of education deans, P-12 partner school system teachers, administrators, and professional development personnel, researchers, policy makers, and graduate candidates.

Sought are innovative presentations and poster presentations that address best practices to enhance achievement, assessment, and accountability for P-12 learning for all students, including those with diverse learning needs. Also invited are proposals that address how teacher and leader candidates apply and demonstrate their content, pedagogical, and professional knowledge, skills, and dispositions to maximize learning by all students. In addition, the conference offers an opportunity for participants to get to know each other and network with teacher educators throughout the nation.

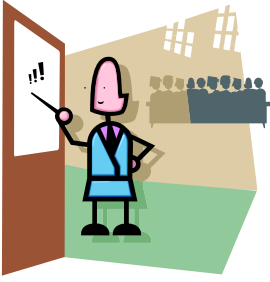
Possible topics include (but are not limited to) innovations in:

- Multiple assessment strategies that measure P-12 performance standards
- Collaboration among candidates, their peers, and school partners for optimal impact
- Working with diverse groups in classrooms and schools
- Sharing and integrating resources to support learning
- Assessment systems to collect and analyze data, including electronic data reporting
- Collaboration among faculty and school partners to improve quality for all students
- Understanding assessment to improve learning
- Program evidence versus unit-level evidence
- Deconstructing the standards
- Congruence and compatibility between program level and unit level evidence
- Performance based instruction and assessment

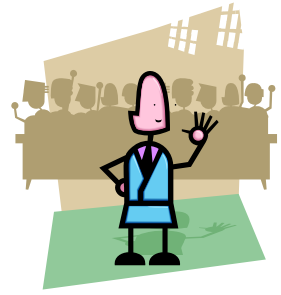


<http://www.kennesaw.edu/cetl/conference/impact/impactindex.htm>





Caucus News



TED's Diversity Caucus

The Diversity Caucus will be providing a series of presentations at TED/TAM in San Diego.

Please refer to your conference program for more information.

If you would like to be part of the Diversity Caucus please email Patricia McHatton at mchatton@tempest.coedu.usf.edu to be added to the mailing list.

See you in November!

Small Special Education Programs Caucus

Calling all SSEPC members and friends! We're looking forward to a collaborative, productive, and fun experience at TED/TAM in San Diego. Our focus remains visibility, collaboration, and scholarly activities. We are working to address those issues at our upcoming meetings and events. Please remember to pick up your SSEPC badge during registration and wear it during the conference.

Please mark these times and dates on your calendar:

November 9, Thursday	2PM-4PM	SSEPC Board Meeting (Parlor room)
November 10, Friday	8AM-12PM	Silent Auction (Fountain Café Hall)
	2PM-4PM	SSEPC General Meeting (Grand Ballroom V)
	4PM-5PM	SSEPC Reception – Nasim Dil Award (Grand Ballroom V)

If you have any questions, please contact Diane Giannola at dgiannola@rider.edu.

We are Looking forward to seeing everyone there!

Respectfully submitted by: Dr. Diane P. Casale-Giannola



TED Dissertation Award



Dr. Ockjean Kim is a recent TED Dissertation Award recipient.

She was recognized during the TED meeting at the 2006 CEC Conference held in Salt Lake City, Utah.

Dr. Ockjean Kim is currently an Assistant Professor in the Department of Special Populations in the College of Education at Minnesota State University, Mankato. In December of 2004, Dr. Kim earned her Ph.D. in Educational Psychology at the University of Minnesota. **Dr. Susan Hupp** was her doctoral advisor. Her award winning dissertation is *Special Education Teacher Interaction Styles During Instruction and Task Behaviors of Elementary Students with Cognitive Disabilities: Sequential Analysis of Instructional Interactions Between Special Education Teachers and Students with Cognitive Disabilities*. Ockjean Kim's dissertation was an observational study of special education teacher-student interactions during language arts instruction with students with cognitive disabilities. The researcher wanted to see what relationship or reciprocal influence teacher directions have with task engagement of elementary students with cognitive disabilities, especially since there were conflicting opinions about consequences of frequent use of teacher directions. Another unique aspect of this study was the addition of sequential analysis, which allowed for the investigation of reciprocal influences between teachers and students. The results showed both positive and potentially negative sides of high levels of teacher directions – teacher directions were effective in leading to active task engagement in children with cognitive disabilities; however, the influence was short-lived, with a potential consequence of increased direction dependency from these students.

Congratulations to Dr. Kim!

TED is proud of her accomplishments and impressed with her research.



The Paraprofessional SIG

WHAT: The Paraprofessional SIG meeting

WHEN: Saturday, November 11, 2006

11:00 am—12:00 pm

WHERE: TED/TAM Conference in San Diego

Refer to your conference program for room location.

SEE YOU IN CALIFORNIA!

Respectfully submitted by: Dr. Betty Ashbaker



A special thanks to Lauren Midgett at East Carolina University for assisting with this edition of *TEDLines*.