



# T E D

A publication of Teacher Education Division of The Council for Exceptional Children

## TED Line-up

In this issue:

- Lines from the President.....2
- TED Elections.....3-6
- Caucus/SIG News.....7-9
- Kaleidoscope/Student News.....8
- TED Conference.....10-17, 20
- Legislative Update.....18
- TED/Pearson Award Nomination.....22
- TESE and CAN Update.....23

And more!!!

Email Dr. Karen Voytecki with future *TEDLines* content:  
[voyteckik@ecu.edu](mailto:voyteckik@ecu.edu)

## TED mission Statement

The Teacher Education Division is a diverse community of professionals who lead and support teacher education on behalf of students with exceptional needs and their families. We accomplish this through research, professional and leadership development, and advocacy.



## 33rd Annual TED Conference

*Remembering our Past  
to  
Prepare for our Future*

**November 3-6, 2010  
St Louis, Missouri**



The Fall 2010 TED Conference in St. Louis is shaping up to be an excellent, professional event, **and** it's going to be fun. One highlight is that Alexa Posny, Assistant Secretary for Special Education & Rehabilitative Services, has agreed to deliver a keynote address.

# Lines from the President...

Patricia Alvarez McHatton

Greetings everyone,

I hope you had a wonderful summer and have settled in to the fall semester. It is always surprising to me how quickly each year passes. It seems like we were just in Nashville and now will soon be together again in St. Louis for the TED Conference. It has been a busy year and we have made great strides toward our strategic goals. At Nashville I presented to you our short term and long term financial goals and recommendations from the Audit Committee and our financial advisor. We have moved forward with their recommendations to ensure the financial stability of our organization by building a healthy reserve and planning for a portfolio to assist TED in increasing its ability to enhance its standing as the premier professional organization for special education teacher educators. This is especially relevant with the current economic conditions.



Chuck Salzberg, TED President-Elect, has been hard at work recruiting proposals for future conferences. In 2011 we will be in Austin and in 2012 we will be in Grand Rapids. Several folks have submitted proposals for 2013 and we have received inquiries from others interested in submitting a proposal for 2014. This long term planning allows us to continue to provide high quality conferences that address pertinent issues and meet member interests and needs.

I also shared with you our plans to design a new logo and a new website for TED. Both of these projects are underway and will be unveiled at the conference in November. Sharon Darling (Chair of the Professional Development Committee) and the Presidential line have all been instrumental in the development of the website. I look forward to hearing your feedback on the new design and your ideas on how to make the website even more responsive to your needs. I also want to thank Fred Spooner and Robert Green for paving the way with our current website and for maintaining the website for the past ten years.

Lisa Dieker, the Chair of our Governmental Relations Committee, and five doctoral students attended CEC's Day on the Hill. We are thrilled that Lisa was selected as CAN Representative of the year. If you know Lisa, you know this is a much deserved recognition. She has done an amazing job representing TED in this manner.

We received inquiries about developing several new Special Interest Groups (SIGs). These include the Adjunct and Part Time Faculty SIG, Early Career SIG, and Early Childhood SIG. Each has a TED member who has agreed to take the lead in coalescing members, assessing interest, and completing the necessary paperwork to bring to the board for a vote. Be sure to check the meeting times and take part in any which appeal to your interests.

Finally, Peggy Gallagher (Immediate Past President of TED) has put together a wonderful slate of nominees for our upcoming elections. Remember to vote when the time comes. Voting details and candidate bios are included in this issue of *TEDLines*.

This has been a wonderful year for me and I want you to know how much I have enjoyed working with and learning from all of our Board Members, you - our members, and the folks that make TED the outstanding organization that it is.

See you in St. Louis!

Patty  
*Patricia Alvarez McHatton*  
President, TED

# TED Elections

The following TED members are running for office for 2011.  
TED members may vote online at [www.tedcec.org](http://www.tedcec.org).  
The elections close Thursday, November 4, at 3:30 p.m. Central.



## Candidates' Biographical Summaries

### Vice President

1 year term of office commencing January 1, 2011: Note VP is a four-year commitment moving from VP to President-Elect, to President, to Past President.

**Nominee: Dr. Vivian Correa**

Vivian Correa is a Distinguished Professor of Early Childhood and Special Education at Clemson University. She earned her doctorate in Visual Disabilities and Early Childhood in 1982 at Peabody College of Vanderbilt University where she conducted research in the area of young children with visual and multiple disabilities. From 1982-1985, she worked closely with Dr. Virginia Sowell in developing and implementing a series of OSEP personnel preparation grants in the area of visual disabilities at Texas Tech University in Lubbock, Texas. She was involved with the Division of Visual Disabilities of CEC and an active member of TASH. She published in the areas of low incidence disabilities.

In 1985, Correa joined the Department of Special Education at the University of Florida to assist with the program in Physical Impairments and Multiple Disabilities. She worked closely with the OSEP technical assistance grants in Deaf-Blindness and Visual Disabilities and took an active role with the American Foundation for the Blind. Dr. Correa also assumed a leadership role in the development and implementation of one of the country's first unified teacher education programs in early childhood and early childhood special education. She continued to support these efforts through OSEP personnel preparation funding at the master's and doctoral level. Parallel to her work in early childhood special education, Correa worked closely with Dr. Bob Algozzine to develop a series of grant supported programs in bilingual and special education.

In 1995, Correa received funding from the National Institute of Child Health and Human Development to work with Drs. Don Bailey and Debra Skinner (UNC Chapel Hill) on a large-scale, 5-year study of Mexican and Puerto Rican families of children with disabilities. A series of publications (two in *Exceptional Children*) highlighted some of the work of this mixed-method research program.

While at UF, Correa also served as Chair of the Department of Special Education (1996-1999) and as Associate Dean of the Graduate School (2003-2006). As Associate Dean, she was responsible for recruitment and retention programs for African-American, Latino, and other "minority" graduate students. She was also Project Director of the Ronald E. McNair Post-Baccalaureate Achievement Program, funded by the U.S. Department of Education to increase the attainment of Ph.D. degrees by students from underrepresented segments of society. In this capacity, Dr. Correa worked closely with minority graduate students from across the campus to prepare them for careers in the academy; including assistance with acquisition of skills required for publishing in scholarly journals.

In 2006, Dr. Correa was recruited to Clemson University as a Distinguished Professor of Early Childhood and Special Education. Since joining Clemson, she has secured two OSEP personnel preparation grants for masters and doctoral studies in special education. She continues her work with culturally and linguistically diverse young children and their families through research on home literacy practices of Mexican immigrant mothers; and, she is mentoring doctoral students in the area of multicultural education and early childhood special education.

Dr. Correa has served as principal investigator or co-investigator on more than 25 funded projects totaling over \$9.5 million. From this work, she has published more than 30 articles in peer-reviewed journals, written a co-edited book (*Interactive Teaming* 4<sup>th</sup> Edition with Jones, Morsink, and Chase-Thomas), several book chapters, and has made over 145 presentations at state, national, and international professional conferences. She has published papers based on theoretical, qualitative, quantitative, single subject, descriptive, and mixed-method research. Dr. Correa has also disseminated her work in Chile, Dominican Republic, Puerto Rico, France, Scotland, Canada, and Spain.

She has served or is currently serving on the editorial boards of *Exceptional Children*, *Teacher Education and Special Education*, *Journal of Disability Policy Studies*, *American Educational Research Journal*, *Journal of Special Education*, *Topics in Early Childhood Special Education*, *Journal of Visual Impairment and Blindness*, and the *Journal for the Association of Persons with Severe Handicaps* (now *Research and Practice for Persons with Severe Disabilities*). From 1990-1997, she and Dr. Paul Sindelar served as Co-Editors of *Teacher Education and Special Education*. She and Sindelar served two terms as Co-editors and oversaw the publication of 4 issues of TESE per year. She also served as Associate Editors for the *Journal of Early Intervention* under the editorship of Dr. Bill Brown.

Dr. Correa has been a member of the Council for Exceptional Children since the early 1980's, serving on the executive boards of the Division of the Visually Handicapped, Division of Early Childhood, and the Teacher Education Division. She is also a member of the Division for Culturally and Linguistically Diverse Exceptional Learners and the Division of Research. Most recently, she served as Member at Large for Diverse, Ethnic and Multicultural Groups on the CEC Board of Directors from 2003-2006. In 2006, she was honored as the recipient of the TED Merrill Excellence in Teacher Education Award. She has expanded her professional work to include organizations outside of special education such as the American Educational Research Association and the National Association of Educators of Young Children.



## Secretary

(Two year-term)

**Nominee: Dr. Mary Catherine Scheeler**  
**Associate Professor, Penn State University**

Mary Catherine Scheeler is an Associate Professor of Special Education at Penn State University. Prior to her work in higher education, she was a student teaching supervisor at Penn State and before that, was a special education teacher. As a classroom teacher, she taught students with learning disabilities and behavior disorders in a wide range of settings. She is committed to improving student outcomes by working to improve teacher preparation therefore her research focuses on finding effective techniques to prepare teachers to work with children with special needs. Her work with immediate feedback, bug-in-ear technology in teacher supervision, and generalization of teaching techniques to bridge the gap between research and practice supports this research focus. She was the recipient of the 2004 TED Dissertation Award and 2007 *TESE* Publication Award. Mary Catherine currently serves as TED Secretary and has learned a great deal about the work of the TED Board through this process. She is running for re-election as TED Secretary to continue to promote TED goals and asks TED members – teacher educators and doctoral students who are our future teacher educators, for their support in this endeavor.

## Representative to the CEC Representative Assembly

(Two year-term)

**Nominee: Dr. Deborah Voltz**  
**Professor, University of Alabama at Birmingham**

Deborah L. Voltz is Director of the Center for Urban Education and Professor in the Department of Leadership, Special Education, and Foundations at the University of Alabama at Birmingham, where she works to prepare general and special educators for inclusive urban schools. Dr. Voltz received her doctorate in special education from the University of Alabama, and has taught in special education teacher preparation programs at Alabama State University, University of Wisconsin-Milwaukee, and University of Louisville. She has taught in teacher education programs internationally at the University of Melbourne, Australia, and at the College of New Jersey's Johannesburg program in South Africa. She also has led in-service teacher professional development through Project SMILE—The Standards Movement and the Inclusion of Learners with Exceptionalities and Project CRISP—Culturally Responsive Instruction for Special Populations. Her research interests include educator preparation for inclusive urban classrooms, and she has published numerous related journal articles and book chapters. Her recent book, *Connecting Teachers, Students, and Standards: Strategies for Success in Diverse and Inclusive Classrooms*, also embraces this topic. Dr. Voltz has been an active member of TED and has served the TED Board previously as Secretary and as Chair of the TED Diversity Committee.

## Member-at-Large: Political Action

(Three year-term)

**Nominee: Dr. Craig Rice**

**Associate Professor, Middle Tennessee State University**

Craig J. Rice currently serves as an Associate Professor at Middle Tennessee State University. Craig has been an active TED member has also served as a member of the Membership and Professional Development Committees and Representative to the Representative Assembly. In addition to his work on these committees and his work with the TED Executive Board, Craig presents at annual TED and CEC Conferences as well as reviews manuscripts for *Teacher Education and Special Education*. Over the past few years, Craig's interest in governmental relations has increased and through some work with a local senator he realizes the influence TED members have on public policy. He recently worked to inform the State Legislature regarding Tennessee's successful application for Race to the Top funds. Tennessee was fully funded with \$501 million dollars. He has attended sessions on lobbying techniques and is excited about the prospect of assuming this position and fulfilling the duties of this office for the Teacher Education Division.

## Member-at-Large: Political Action

(Three year-term)

**Nominee: Dr. Marcia Rock**

**Associate Professor, University of North Carolina at Greensboro**

Marcia Rock joined the faculty in Specialized Education Services at the University of North Carolina at Greensboro in 2009. Previously she was an associate professor at The University of Alabama. Marcia has received a number of awards, including the Alabama Federation of the Council for Exceptional Children's Jasper Harvey Award for Outstanding Teacher Educator, The University of Alabama's Outstanding Commitment to Excellence in Teaching Award, and The University of Alabama's College of Education Research Impact Award. She has focused her engaged scholarship on the topics of technology enhanced pre- and in-service teacher education, strategic self-monitoring, and parent advocacy/special education law, resulting in numerous published articles. Currently, she serves on editorial review boards for *Teacher Education and Special Education* and *Intervention in School and Clinic* as well as being an associate editor for *Preventing School Failure*. Her past leadership responsibilities have included directing an \$800,000 OSEP funded personnel preparation grant, serving as president of the Alabama Council for Children with Behavior Disorders (CCBD), participating on Alabama's ADHD Statewide Advisory Council, and chairing the Arc of Tuscaloosa County's Human Rights and Behavior Review Committees. She has also served as an expert witness to the Southern Poverty Law Center. If elected, she would work with individuals on the Executive Board, in Special Interest Groups (SIGs), in general membership, and with non-members to achieve the goals put forth in TED's 2014 Strategic Plan. Also, she would invite others, representing diverse backgrounds and interests, to join in advancing important political advocacy networks on the grassroots, regional, national, and global scenes. Finally, she would build on the pioneering work of current representative, Dr. Lisa Dieker, to make political advocacy more meaningful to membership as a whole through innovative use of web based technologies.



# Caucus News



## Small Special Education Programs Caucus (SSEPC)

A Message from the SSEPC Chair – Dr. Joanne Vesay

Let me begin by sending a **BIG** thank you to two of our own SSEPC members, **Georgia Kearns** and **Cynthia Watkins**, our wonderful coordinators of this year's TED Conference. I'm certain they have great things planned for us in St. Louis!

Highlighted SSEPC Events at TED, St. Louis (check conference program for locations):

*Thursday, November 4th*

SSEPC Symposium - 8am to 9:50am

SSEPC Executive Board Meeting – 3:00pm to 3:50pm

*Friday, November 5<sup>th</sup>*

SSEPC Silent Auction – 12:30pm to 2:30pm

SSEPC General Business Meeting – 3:00pm to 4:50pm

SSEPC Nasim Dil Award and Reception – 5:00pm to 6:30pm

The review process of submissions for the Monograph is beginning. Stay tuned for an update from Michele Kamens and Debi Gartland at the General Business Meeting.



### **SILENT AUCTION DONATIONS NEEDED:**

Please bring all donations for the Silent Auction to Evelyn Barese, Friday morning prior to the beginning of the auction. Please check your conference program for the location.

Please stop by the registration desk when you arrive at TED. A representative from SSEPC should be available most registration days/times to answer questions. If you are interested in volunteering at registration, please contact Wendy Hacke, [wdhacke@pacbell.net](mailto:wdhacke@pacbell.net).

**DINNER RESERVATIONS:** If you are traveling alone to the conference, please plan on joining us for dinner Wednesday and/or Thursday night. Sign-up sheets will be available at the registration desk for SSEPC Members.

**I look forward to seeing all of you at St. Louis in November!**



Division of  
International  
Special Education  
and Services

The voice and vision of special education

## TED Diversity Caucus

Please make plans to attend the **2010 TED Conference in St. Louis, November 3-6**, as well as the pre-conference workshops.

- The Diversity Caucus board meeting will be held at 1:00 p.m. – 1:50 p.m. on Thursday, November 4.
- The Diversity Symposium will be held from 8:00 a.m. - 9:50 a.m. on Friday, November 5.
- The Diversity Caucus General Business Meeting will be held on Friday, November 5 from 1:00 p.m. - 1:50 p.m.



## TED Proposed Early Childhood SIG

Meeting on Thursday, November 4 from 1:00 pm - 1:50 pm.



# TED Student News

## 2010 Kaleidoscope at St. Louis

Kaleidoscope will be on Friday, November 5 from 1:00 p.m. to 4:50 p.m. with a reception for students following. Please remember to bring a donation item with your school logo on it for the Kaleidoscope raffle. The Kaleidoscope board meeting will be held from 8:00 a.m. to 8:50 a.m.

**Welcome to our new  
student representatives**

**Bharti Tandon**  
University of Wisconsin—Milwaukee

**Andrea Jasper**  
Purdue



# Paraeducator SIG

## Paraeducator SIG



Our next scheduled meeting is on **Friday, November 5** from **1:00 pm-1:50 pm** at the **2010 TED Conference**.

## Proposed Adjunct and Part Time Faculty SIG

If you are interested in discussing topics for future meetings and the nature of this proposed special interest group, please come to the meeting on **Thursday, November 4** from **3:00 pm - 3:50 pm**.

Hope to see you there!



## Proposed Early Career Faculty Special Interest Group

Please plan to join the new Early Career SIG for our meeting at the TED annual meeting! We plan to discuss topics relevant to early stages of careers in higher education to ensure success by sharing ideas and experiences and providing support for career advancement. Topics of interest for future meetings and collaborative opportunities will be generated. The meeting will be held on **Thursday, November 4** from **4:00 pm - 4:50 pm**.

If you have any questions or suggestions, feel free to contact **Dr. Christy Borders** at [christy.borders@illinoisstate.edu](mailto:christy.borders@illinoisstate.edu) or **Dr. Erica McCray** at [edm@coe.ufl.edu](mailto:edm@coe.ufl.edu).

Hope to see you in St. Louis!

**33rd ANNUAL CONFERENCE  
TEACHER EDUCATION DIVISION - COUNCIL FOR EXCEPTIONAL CHILDREN**

**Conference Theme: Remembering Our Past to Prepare for Our Future**

**Crowne Plaza Hotel – DOWNTOWN  
St. Louis, Missouri  
November 3-6, 2010**

**(Please check the Conference Program for exact times and rooms.)**

## **Preconference Highlights:**

All preconference sessions will be held on Wednesday, November 3, 2010

9:00 am-4:00pm (Full day workshop)

### **1. *Must-have technology: Increasing effectiveness in pre-service teacher education***

*This workshop is intended for beginner/intermediate level participants only.*

Presenters: Krista Vince Garland, Zachary Walker, Bertina Combes, Jessica Hunt, Tracey McKinney, Selma Powell, Jacqueline Rodriguez, and Carrie Straub.

### **2. *Program Recognition Report - Developer Workshop.***

The CEC Recognition Report Developer Workshop is designed to **assist individuals developing Program Recognition Reports** as a part of the Institution's participation in NCATE.

Presenter: Christy Hooser

### **3. *Program Recognition Report - Reviewer Workshop.***

The CEC Program Recognition Report Reviewer Workshop is designed for **individuals becoming a CEC Program Recognition Report reviewer**. By taking this workshop the participant is making a **commitment to participate actively as a CEC program recognition report reviewer**.

Presenter: Joni Baldwin

9:30am-12:30pm (Concurrent ½ day workshops)

### **1. *Maintaining a scholarly agenda in the midst of It ALL!***

*This is a panel discussion moderated by Sharon M. Darling, Ph.D. and Lisa Vernon-Dotson*

### **2. *The ins and outs of online teaching: instructing for the future!***

*This workshop is intended for intermediate/advanced level participants only.*

Presenters: Eleazar Vasquez III and Stuart E. Schwartz Ed.D.

1:00pm-4:00pm (1/2 day workshop)

### ***Supervising paraprofessionals: What pre-service teachers need to know***

Presenter: Kent Gerlach, Ed.D., Pacific Lutheran University

(Additional materials fee of \$25 for activities notebook, book of readings and a copy of the book, *Let's Team Up.*)



# Conference Highlights

## Keynote Addresses:

**Drs. Mary Brownell, Charles Salzberg and Ben Lignugaris-Kraft**, representing the Research Committee of TED, will present Wednesday evening on "Evaluating Special Education Teachers: Challenges and Reasonable Possibilities".

**Dr. Jane West**, a well-known presenter at TED, will share a retrospective of the laws and future implications, linking the past to the future. This presentation will be on Thursday morning.

**Ms. Parthenia Cogdell**, Past President of CEC (1979), the 1998 CEC Outstanding Contributor Award winner and member of the Subcommittee on Knowledge and Skills, will share her view from the past to the future in the field of special education, "The Past, the Present - Pathway to the Future". This address will be Friday morning.

**Dr. Alexa E. Posny**, Assistant Secretary for Special Education and Rehabilitative Services, has been invited to share the most current information from OSERS in Washington, D.C. This address will be on Friday morning.

## Receptions/ Continental Breakfast:

Opening Reception: Wednesday evening

President's Reception: Thursday evening

Continental Breakfast: Thursday, Friday and Saturday morning

## Other Important Activities:

First Time Attendees Meeting

Diversity Symposium

SSEPC Symposium

Kaleidoscope

SSEPC Silent Auction

Women in Leadership: Retrospective

Multiple strands on topics related to the conference theme

New SIGs meetings

Vendors

Interviews for positions

The conference will end at 1:00 pm on Saturday.

Registration is available on-line at <http://www.tedcec.org/> .

Hotel registration available at 1-800-925-1395. Be sure to ask for the Teacher Education Division special rate.



## Wednesday, November 3: Preconference workshops

### 9:00 a.m.-4:00 p.m. (Full-day workshop)

#### I. **Must-have technology: Increasing effectiveness in pre-service teacher education**

*This workshop is intended for beginner/intermediate level participants only.*

Presenters: Krista Vince Garland, Zachary Walker, Bertina Combes, Jessica Hunt, Tracey McKinney, Selma Powell, Jacqueline Rodriguez, Carrie Straub.

This workshop will focus on *essential, easy-to-use and adopt* technology applications teacher-educators can infuse into their methods and other special education courses. These technologies can be used to plan lessons, communicate with students and parents, teach lessons in UDL, etc.

Attendees, regardless of their level of proficiency OR comfort, will be able to take usable skills back to their campuses to share with their own students. We will demonstrate and answer questions about varied technology applications for now and the future, including programs like Camtasia, Google Docs, Wiki pages, Blogs, Adobe Presenter, Polleverywhere, Quia, Real Player, Xtranorma, Prezi, and others. These resources will be categorized as such: (1) planning and organization, (2) teaching and communicating, and (3) assessment. Most of the resources will be free applications.

This is a full-day workshop. The morning will focus on an overview of the applications and technology described above and the afternoon will focus on providing small-group instruction on using these technologies in the delivery of your courses. We encourage attendees to *bring your own Wi-Fi accessible computers and PDAs* so that you can use the free applications as we explain them. For the afternoon session, we encourage attendees to bring course material you are interested in adapting for web-based delivery.

### 9:30 a.m.-12:30 p.m. (Concurrent 1/2 day workshops)

#### I. **Maintaining a scholarly agenda in the midst of It ALL!** *This is a panel discussion*

*moderated by Sharon M. Darling, Ph.D., Florida Atlantic University and Lisa Vernon-Dotson, Ph.D., Duquesne University*

This interactive half-day session explores how to maintain a productive research agenda while navigating the academy and life in general. A diverse panel of special education teacher educators, who are at various points in their careers and who are from varied types of institutions of higher education, will share their experiences as teacher-scholars. They will describe successful strategies for maintaining a high level of scholarly productivity while balancing the demands of role requirements of faculty. Attendees will brainstorm and explore avenues for *Maintaining a Scholarly Agenda In the Midst of It All!*

#### II. **The ins and outs of online teaching: instructing for the future!** *This workshop is intended*

*for intermediate/advanced level participants only.* Presenters: Eleazar Vasquez III, Ph.D., University of Central Florida; Stuart E. Schwartz Ed.D., National University

Increasingly, universities and teacher preparation programs are embracing technology and are providing coursework online. Unfortunately, technology changes so quickly it is often difficult for educators to identify or understand how to incorporate it into their instruction. The presenters will focus on two main areas. First, we will focus on technology and the use of various tools, such as Adobe Connect, Elluminate, Bug in Ear Technology, eCOVE, Camtasia, and Adobe Presenter for synchronous and asynchronous learning activities for teacher educators. Second, we will focus on supporting faculty so that they are using best practices for the delivery of their online courses. Participants will be provided with practices and suggestions to improve their online instruction and to assist their colleagues and graduate students with their online teaching performance.

**1:00 p.m. -4:00 p.m. (1/2 day workshop)**

I. ***Supervising paraprofessionals: What pre-service teachers need to know*** Presenter: Kent Gerlach, Ed.D., Pacific Lutheran University

Beginning teachers report that they feel unprepared to direct and manage the work of paraprofessionals. So what are the implications for teacher education? Through the use of case studies, activities, and student teaching assignments, this workshop will convey how to prepare pre-service teachers to direct and manage the work of paraprofessionals. Information will also include activities designed to promote the understanding of the role of paraprofessionals, teachers, and principals. Topics will include an understanding of supervisory roles, including writing plans for a paraprofessional to follow, appropriate delegation and communication techniques, scheduling for the paraprofessional, mentoring the paraprofessional, goal setting for the team, orientation to the special education program, problem solving, working with different personalities and team building techniques. CEC'S Knowledge and Skill base for all entry-level Special Education Paraprofessionals and information on CEC's proposed Special Ethical Principles and Practice Standards will also be discussed. Participants will receive an activities notebook, a book of readings and a copy of the book, *Let's Team Up*.

**9:00 a.m. -4:00p.m.**

***Program Recognition Report: Developer Workshop***

Presenter: Joni, Baldwin, Ph.D., University of Dayton, Dayton, Ohio

The CEC Recognition Report Developer Workshop is designed to **assist individuals developing Program Recognition Reports** as a part of the Institution's participation in NCATE. Participants will learn the components of a performance-based teacher preparation program including:

Understanding the components of the CEC Standards, Development of program-wide performance-based assessments aligned with standards, Strategies to collect, analyze and report data, Evaluation of current program strengths and weaknesses, Identify strategies to improve the program. Understanding of the NCATE/CEC program recognition report process, Development of the CEC program recognition report, Identify exemplars of program recognition report components, and tips for high quality program recognition reports.

Participants receive CEC Program Developers Handbook and What Every Special Educator Must Know...(6th Edition).

**9:00 a.m. -4:00p.m.**

***Program Recognition Report: Reviewer Workshop***

Presenter: Christy Hooser, Ph.D., Eastern Illinois University, Charleston, IL. The CEC Program Recognition Report Reviewer Workshop is designed for **individuals becoming a CEC Program Recognition Report reviewer**. By taking this workshop the participant is making a **commitment to participate actively as a CEC program recognition report reviewer**. Participants will learn how to:

Examine alignment of program assessment systems with CEC Standards, Evaluate current program strengths based on performance assessments and data Understand the CEC/NCATE program recognition report process, Develop the CEC program recognition review report, Identify exemplars of program recognition report components, and tips for writing useful program recognition report reviews. Conduct systematic program reviews.

Participants receive *CEC Program Reviewers Handbook* and *What Every Special Educator Must Know...* (6th Ed.) There is no fee for this workshop. To be considered a completed **CEC Reviewer Application** must be received at CEC by September 30, 2010. Selected applicants will be notified. Contact Brandi Paige at 703 264 9469 or [prostandards@cec.sped.org](mailto:prostandards@cec.sped.org) with questions.



## TED Research Roundtables

The Research Committee of the Teacher Education Division (TED) is sponsoring a Teacher Education Research Roundtable Session at the Annual TED meeting in St Louis, MO on **Friday, November 5, 2010 from 7:00-9:00 am.**

The seminar is intended for faculty interested in broadening their knowledge on research in the area of special education teacher education. Topics covered will include developing a research agenda, successfully publishing in research based journals, and tips for writing successful grant applications.

The purpose is to bring participants together with nationally-recognized special education faculty to work closely on their research areas of interest. These scholars will provide practical information, advice, and support to their colleagues in a small group setting. This opportunity also assists participants by providing an informal environment for networking with fellow colleagues in their research areas.

Applicants should draft a brief 1-2 page summary outlining their research interests/ideas, career goals, and a few questions they would like answered at the seminar. Please include any topics of interest or questions you may have about research. Ideas could include but are not limited to:

- Designing qualitative research studies
- Using large-scale databases for teacher education research
- Measuring the impact of teacher education on student achievement

**Applications are due by October 8, 2010, and accepted attendees will be notified that they have been selected to participate by October 15, 2010.**

**Interested applicants should submit their 1-2 page research summary electronically to Melinda Leko at [leko@wisc.edu](mailto:leko@wisc.edu)**

A maximum of **24 participants** will be selected to attend this seminar, and preference will be given to faculty in tenure accruing positions.

# Schedule at a glance

## Tuesday, November 2, 2010

Event	Time
<b>TED Board Meetings</b>	
Executive Committee	3:00 pm – 5:30 pm
Dinner	5:30 pm – 6:30 pm
Executive Board	6:30 pm – 9:00 pm

## Wednesday, November 3, 2010

Event	Time
Conference Registration	9:00 am – 6:00 pm
<b>Opening General Session: Research Panel: Dr. Mary Brownell, Dr. Chuck Salzberg, and Dr. Ben Lignugaris-Kraft, Keynote</b>	<b>4:30 pm – 6:00 pm</b>
<b>Opening Reception</b>	<b>6:00 pm – 7:30 pm</b>
<b>Preconference Workshops</b>	
<i>NCATE/CEC – Program Recognition Report: Developer Workshop</i>	9:00 am – 4:00 pm
<i>NCATE/CEC – Program Recognition Report: Reviewer Workshop</i>	9:00 am – 4:00 pm
<i>Must-have technology: Increasing effectiveness in pre-service teacher education</i>	9:00 am – 4:00 pm
<i>The ins and outs of online teaching: instructing for the future!</i>	9:30 a.m.-12:30 p.m.
<i>Maintaining a scholarly agenda in the midst of It ALL!</i>	9:30 a.m.-12:30 p.m.
<i>Supervising paraprofessionals: What pre-service teachers need to know</i>	1:00 p.m. -4:00 p.m.
<b>TED Board and Committee Meetings</b>	
Audit	9:00 am – 11:00 am
TED Executive Board	9:30 am – 1:00 pm
Elections and Awards	1:00 pm – 2:00 pm
Publications	1:00 pm – 3:00 pm
Professional Development	3:00 pm – 4:00 pm
Conference Advisory	2:00 pm – 4:00 pm
Governmental Relations (Pals/Gals)	2:00 pm – 3:00 pm
Research	3:00 pm – 4:00 pm
Budget and Finance	3:00 pm – 4:00 pm

# Schedule at a glance cont...

## Thursday, November 4, 2010

Event	Time
Conference Registration	7:00 am – 7:00 pm
Continental Breakfast	7:00 am – 8:30 am
First Attendees Meeting (Pick-up breakfast and proceed to Missouri Upper)	7:00 am – 7:50 am
The Higher Education Consortium for Special Education	8:00 am – 8:50 am
Exhibits	8:00 am – 5:00 pm
TED Elections (near registration)	8:00 am – 10:00 am
TED Elections (near registration)	12:00 pm – 3:30 pm
Presentations	8:00 am – 9:50 am
<b>General Session: Dr. Jane West, Keynote</b>	<b>10:00 am – 11:45 pm</b>
Presentations	12:00 pm – 4:50 pm
<b>SSEPC Symposium</b>	<b>8:00 am – 9:50 am</b>
<b>Presidents' Reception</b>	<b>7:00 pm – 9:30 pm</b>
<b>TED Board and Committee Meetings</b>	
Membership	8:00 am – 9:50 am
TESE Editorial Board	9:00 am – 9:50 am
Knowledge and Skills	12:00 pm – 12:50 pm
325 T Project Conversations	1:00 pm – 2:50 pm
Proposed Early Childhood SIG	1:00 pm – 1:50 pm

## Thursday, November 4, 2010 (continued)

Event	Time
Diversity Caucus Board	1:00 pm – 1:50 pm
State Subdivisions	2:00 pm – 2:50 pm
SSEPC Executive Board	3:00 pm – 3:50 pm
Proposed Adjunct & Part Time Faculty SIG	3:00 pm – 3:50 pm
Proposed Early Career SIG	4:00 pm – 4:50 pm
TED Executive Board	4:00 pm – 4:50 pm
<b>TED General Business Meeting</b>	<b>5:00 pm – 6:30 pm</b>

# Schedule at a glance cont...

2010 TED Conference  
November 3-6, 2009  
St. Louis, Missouri

## Friday, November 5, 2010

Event	Time
Conference Registration	7:00 am – 6:00 pm
Continental Breakfast	7:00 am – 8:30 am
Exhibits	8:00 am – 5:00 pm
Research Working Group Follow-up	7:00 am – 8:50 am
Presentations	8:00 am – 9:50 am
<b>Diversity Symposium</b>	<b>8:00 am – 9:50 am</b>
<b>General Session: Ms. Parthenia Cogdell, and Dr. Alexa Posny, Keynote</b>	<b>10:00 am – 11:45 pm</b>
Presentations	12:00 pm – 4:50 pm
<b>Kaleidoscope</b>	<b>1:00 pm – 4:50 pm</b>
<b>Kaleidoscope Reception</b> (ticket required)	<b>5:30 pm – 6:30 pm</b>
<b>TED Board and Committee Meetings</b>	
NC TED	7:00 am – 7:50 am
OH TED	7:00 am – 7:50 am
FL TED	7:00 am – 7:50 am
Kaleidoscope Board	8:00 am – 8:50 am
IL TED	9:00 am – 9:50 am
Paraeducator SIG	1:00 pm – 1:50 pm
Diversity Caucus General Business	1:00 pm – 1:50 pm
SSEPC General Business	3:00 pm – 4:50 pm
SSEPC Reception	5:00 pm – 6:30 pm
SSEPC Auction	12:30 pm – 2:30 pm

## Saturday, November 6, 2010

Event	Time
Conference Registration	7:00 am – 11:30 am
Continental Breakfast	7:00 am – 8:30 am
Exhibits	8:00 am – 11:00 am
Presentations	8:00 am – 12:50 am
Conference Advisory	1:00 pm – 2:30 pm



# Legislative Update



Submitted by: **Dr. Jane E. West**, TED's Legislative Liaison

Several members of the special education/disability community were invited to meet with Sec. Duncan and OSERS Asst. Sec. Alexa Posny to discuss how reauthorization might provide opportunities to better align IDEA and ESEA.

Attendees at the meeting were: Bill East, NASDSE; Nancy Reder, NASDSE; Andy Imparato, AAPD; Deb Ziegler, CEC; Katy Neas, Easter Seals; Connie Garner; Paul Marchand, the ARC and UCP; Laura Kaloi, NCLD; Mary Kealy, Loudon County Public Schools; Doug Cox, Special Ed Director for the state of Virginia; Mike Hardman, Dean of Education, Univ. of Utah; and Don Deshler, University of Kansas.

Secretary Duncan opened the meeting noting that he intended to see ESEA reauthorized early in 2011 in a bipartisan way. One of his goals is to find ways to effectively link IDEA and ESEA together. He noted that staff internally had been talking about this at great length and he wanted to hear our ideas.

Asst. Secretary Alexa Posny noted that there were several areas where ESEA could be amended to address concerns related to students with disabilities including the following: assessments, accountability and not penalizing students because of inclusion; integrating performance measures; highly effective teacher performance measures that reward inclusion; equity related to FAPE and LRE; inclusion of school wide approaches such as PBIS, UDL, RTI; early intervening; and family engagement. (There were more items on the list, however she went through them quickly and these are the ones I was able to capture.)

## Participants' comments

People went around the table and provided reflections and suggestions, including the following:

- IDEA needs to be better implemented
- Preparation and professional development need to be strengthened, including adding back the authority to prepare high incidence teachers under Part D personnel prep grants
- Partnerships between higher education and K-12 need investments
- Short term quick fix preparation programs, such as Teach for America, are not effective for students with disabilities
- The big messages from the Department never include students with disabilities. This should change, for example there should be a subgoal for students with disabilities increasing their college graduation rate as part of the overall goal to make the US the top producer of college graduates in the world by 2020
- States that received Race to the Top grants are struggling to implement performance pay and have little idea how to do that for special education teachers; one common response is to leave them out of such a system entirely
- Do not undertake a full reauthorization of IDEA this go-round – rather surgically make changes as needed and utilize ESEA to address key issues for students with disabilities
- All activities should be targeted to increased access for students with disabilities
- Parents need additional support and education; they continue to be challenged to secure the services they need for their kids
- This week, as the Secretary begins the teacher recruitment initiative and so much focus is on education nationally, use the bully pulpit to address the shortage of special education teachers.
- Early childhood (Part C) is on life supports; needs a bigger federal investment and a champion from the Department
- The capacity of state education agencies related to special education is shrinking and this must be addressed
- Start this process by establishing clear policy goals and use those to drive the various initiatives
- Right now we have two systems – special education and general education—and all work needs to move in the direction of making this one system.

# Legislative Update cont...

## Follow up

Asst. Sec. Posny noted that she would put some ideas on paper and send them around for comments/ further discussion. It was suggested that working groups be put together to further articulate areas to address during ESEA reauthorization. I spoke with Alexa afterward and told her I would be sharing a summary of the meeting with TED and she encouraged that. She said she will want input. She also noted that she would welcome furthering this discussion when she speaks at the TED conference in November.

## Announcement

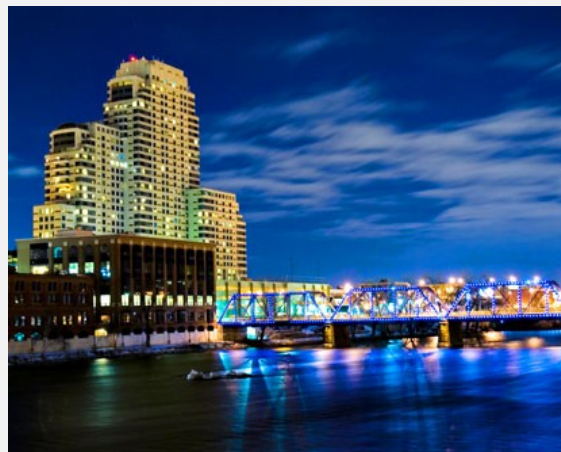
The Department has scheduled a celebration of the 35<sup>th</sup> Anniversary of IDEA for November 18 from 3-7 pm in the Hart Building. They are working with Members of Congress on this and will seek the community's participation and assistance.

## *Future Locations of Annual TED conferences*

Austin, Texas November 9-12, 2011



Grand Rapids, Michigan November 7-10, 2012



**Call for Papers**  
**Special Issue of The Journal of Early Childhood Teacher Education**  
**Topic: Inclusive Early Childhood Teacher Education**  
Guest Editor: Leslie J. Couse      Guest Co-Editor: Susan L. Recchia

For nearly four decades, educating young children with disabilities has been the legal responsibility of the public education system. In more recent years, however, school systems have been shifting their approaches to early education toward more inclusive frameworks. Correspondingly, early childhood teachers are entering classrooms that are increasingly diverse. Meeting the needs of all children has altered educational practice and teacher preparation. This theme issue seeks to explore how teacher education programs are meeting the challenge of preparing teachers for inclusive early childhood settings.

Quality inclusive early childhood teacher education includes policies and practices that value the right of *all young children*, to participate in a range of activities as full members of families, communities and society. Preparing teachers who are inclusive in their practice by providing *access, participation* and *supports* for young children and their families requires collaboration. Teacher preparation programs engage in various levels of collaboration between general and special education. Currently, teacher certification in all but a handful of states requires some course content in teaching children identified for special education services. Some programs infuse inclusive practice into course work, others have blended or integrated preparation for teachers in early childhood and special education, while still others are developing collaborative teacher education models that provide a systematic unified approach to teacher preparation for inclusive classrooms.

We seek manuscripts that reflect a variety of perspectives relative to inclusion in early childhood teacher education. These may include:

- Development of new or the evaluation of existing inclusive early childhood teacher preparation program models
- Preparing teachers to use instructional techniques that increase young children's participation in play and learning at a variety of ages (birth-8yr.) and in a variety of settings (e.g., family center-based care, preschool, and primary school).
- Professional development that promotes inclusive practice among experienced teachers
- The growth of pre-service teachers in understanding inclusive education
- Family and professional collaboration in teacher preparation that promotes inclusion
- Interdisciplinary or transdisciplinary approaches to teacher preparation
- Approaches to teacher preparation that promote a sense of belonging for every child

This special issue of JECTE will reflect a variety of recognized methodologies (e.g., quantitative, qualitative, and mixed methods) and is anticipated for December 2011 publication. Articles must follow current *APA Guidelines* and the criteria outlined in *Instructions to Authors* which can be found in the journal or on the website ([www.tandf.co.uk/journals/titles/10901027.asp](http://www.tandf.co.uk/journals/titles/10901027.asp)). For more information about this issue, contact Leslie J. Couse ([leslie.couse@unh.edu](mailto:leslie.couse@unh.edu)). Submit manuscripts as an email attachment by April 10, 2011, directly to the attention of the Guest Editor at [leslie.couse@unh.edu](mailto:leslie.couse@unh.edu).



# Location, Location, Location!

Have you thought about whether you might like to host the annual TED conference for 2014? It's fun and a great way to increase the visibility of your institution and activities.

Is your location an easy place to get to and an interesting place to visit? Are there facilities to house a modestly sized conference?

There is a lot of support and information available from TED for members who host our conferences. If you would like to discuss that possibility, we'd be delighted to talk with you about it.

Give me a call or an email 435/797-3234  
c.salzberg@usu.edu.

Submitted by: Dr. Chuck Salzberg, TED President-Elect

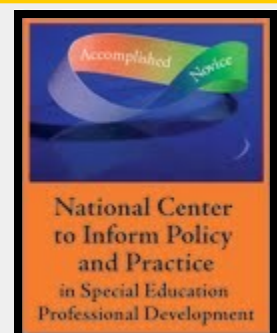


## The National Center to Inform Policy and Practice

*The National Center to Inform Policy and Practice* in Special Education (NCIPP) is an OSEP-funded center which aims to improve teacher quality and increase commitment to teaching students with disabilities by:

- informing special education policy and practice on induction and mentoring
- identifying and recommending induction and mentoring implementation strategies

NCIPP recently released 8 *Induction Insights* aimed specifically for teacher educators. *Induction Insights* are a collection of briefs derived from longer research syntheses that target key topical areas in special education induction and mentoring. Titled include *Co-teaching and Team Teaching: Promising Practices for Special Education Teacher Induction* and *First-Year Challenges: Using the Concerns of Novice Special Education Teachers to Inform Preservice Practices*. You can access each of the publications by going to <http://education.ufl.edu/grants/ncipp/docsfortchreducators.php>.



# TED/Pearson Excellence in Teacher Education Award

**Nominations for the TED/Pearson Excellence in Teacher Education Award are due January 15, 2011.**

The TED/Pearson Excellence in Teacher Education Award recognizes an individual who has demonstrated an exemplary commitment to one of the following: (a) teacher education in special education, (b) preparation of future leaders and/or quality educators, and (c) research supporting the preparation of teachers and/or delivery of services to children with disabilities, legislative leadership, and scholarly works.

## **Nominees must meet the following criteria:**

- a. They must be currently active in training educators in special education;
- b. They must be nominated by a member of CEC; and
- c. They cannot be current members of the TED Executive Committee or members of the Selection Committee.

Letters of nomination should document the nominee's eligibility for the award, and should be accompanied by a current vita.

## **Consideration will be given to:**

- a. Commitment to teacher education in special education.
- b. Preparation of future leaders and/or quality educators.
- c. Research supporting the preparation of teachers and/or delivery of services to children with disabilities, legislative leadership, and scholarly works.

All nomination materials should be sent electronically by **January 15, 2011** to:

Dr. Karen Voytecki, Executive Director  
Teacher Education Division

voyteckik@ecu.edu



## From the *TESE* Editors: Laurie deBettencourt and Michael Rosenberg

We are very excited as we near the end of our first year – 33(4) has been sent to press and should be in your mailbox early November. We want to thank all the folks who have submitted and reviewed manuscripts during this past year. We will present our publication report during our conference in St. Louis. We hope to see everyone there!

We want to remind everyone of the online first feature of *TESE*. Accepted manuscripts are available online prior to the published hard copy getting to your mailbox. Please remember to point your students to the website and the article's .url instead of handing out hard copies when you lecture. The "impact factor" of our journal relies partly on the number of "hits" to our website.

We are still exploring ways of integrating the work of Kaleidoscope into a section of the journal and having graduate student representation on the editorial board. We hope to discuss this further with our editorial board in St. Louis. We value the effort our editorial board has given us by reviewing the manuscripts they receive in a timely manner with highly relevant reviews. We recognize our journal is only as good as the manuscripts received and the quality of the reviews posted. Thanks to all of you.

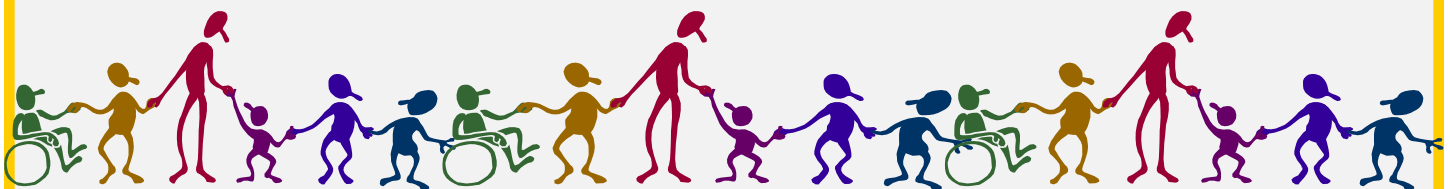
See you in St. Louis!

### Child Action Network (CAN)

This summer TED had the privilege to once again sponsor the CAN Representative to Washington for 2 days of training and a day on the hill. Even better is through collaborative use of funds and with some additional support from students' university programs we were able to fund part or all of the training and travel for 5 doctoral students. The day on the hill was a great success with over 12 visits to various legislators among the TED team. Please come to the CAN meeting if you are interested in an update of what is happening on the hill. Also we are still trying to get 50 states and 50 Political Action Liaisons (PALs) and Graduation Action Liaisons (GALs) to join our grassroots network of TED members advocating for special education needs on the hill. This fall is my last TED board meeting as the CAN coordinator and I wanted to thank the TED membership and those who helped start and will continue to build the PAL/GAL network. This role has been a great honor and opportunity to serve the TED Members and the field.

Thanks!!

Submitted by: Dr. Lisa Dieker, TED Member-at-Large for Political Action and CEC CAN Representative



A special thanks to Matthew Haskett at East Carolina University for assisting with this edition of *TEDLines*.